



SCHOLASTIC

SEPTEMBER 1, 2014

VOL. 71 NO. 1

ISSN 1047-1410

# ScienceWorld<sup>®</sup>

current science<sup>®</sup>

WATCH  
A VIDEO

[www.scholastic.com/scienceworld](http://www.scholastic.com/scienceworld)



## INSIDE

### BIOLOGY

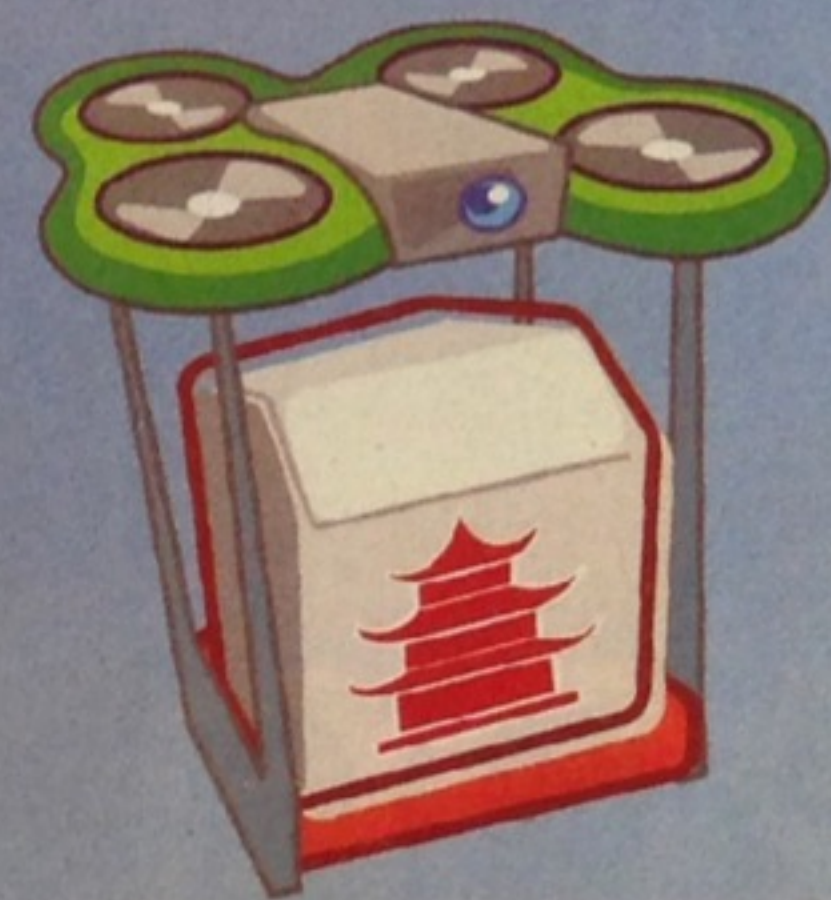
Cancer-Sniffing Canines

### EARTH SCIENCE

How Did the Universe Get Here?

### PHYSICS

Suiting Up for the Deep Sea



## ENGINEERING

# DRONES IN YOUR FUTURE

How scientists are putting flying robots to work for you







**SCARRED FOREST:** Poachers cut a large burl from this redwood tree in California.

# NUMBERS IN THE NEWS

**\$1.9 million**

Price of a Tibetan mastiff puppy recently sold in China.

Ancient herding tribes once used the large dogs to guard people and property.

**3,000**

Approximate number of bacteria every dollar bill carries on its surface.

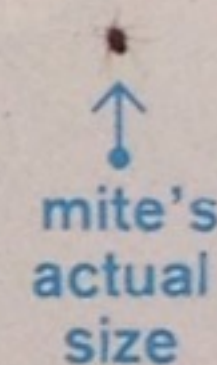


**500**

Distance, in light-years, from Earth to a newly discovered planet. The planet is the right distance from a star to be able to support life.

**322**

Body lengths per second that a mite native to California can run. For its size, it sprints faster than any other animal on Earth.

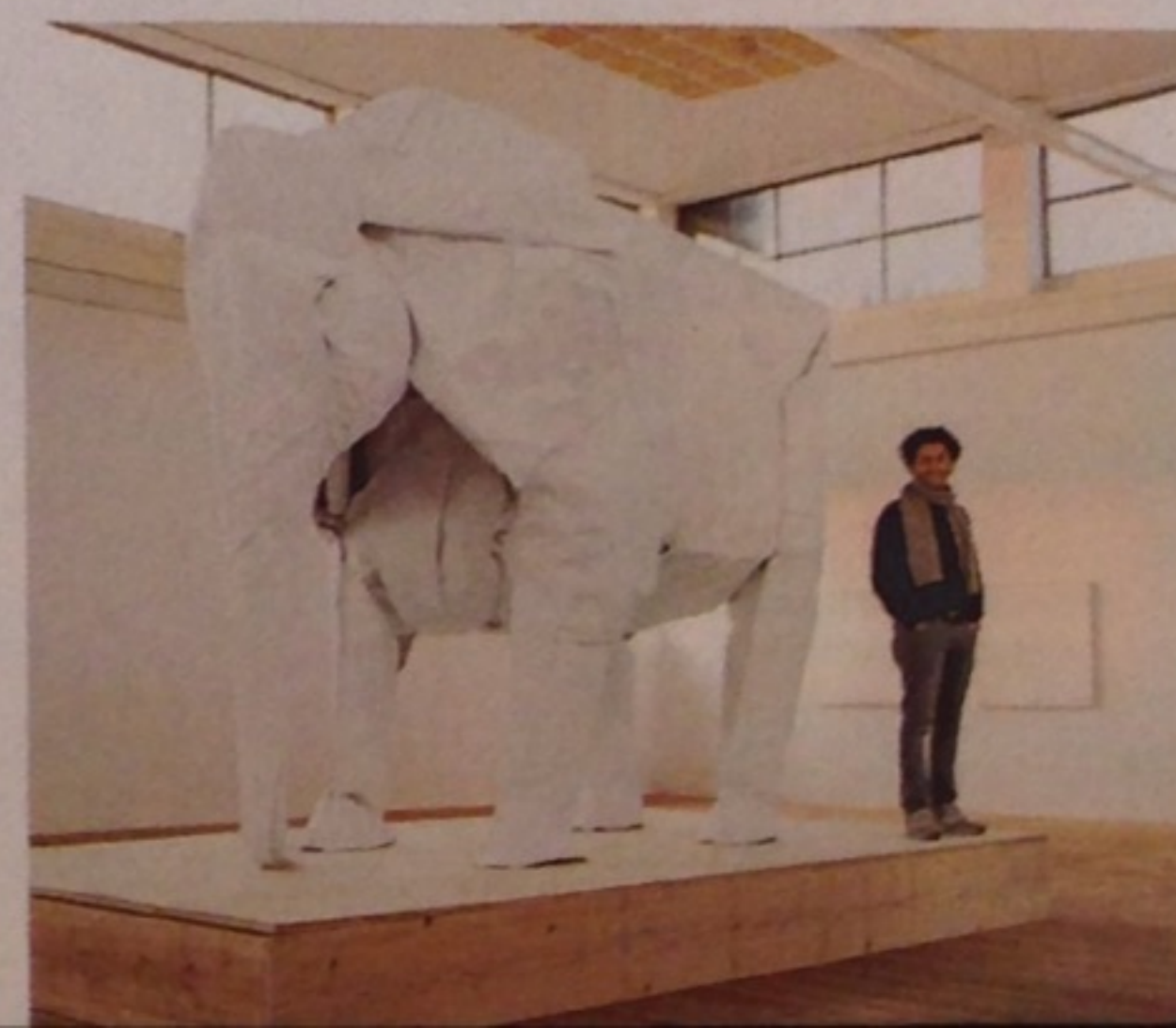


**44**

Speed, in miles per hour, of the world's fastest elevator. It's being built in Guangzhou, a city in southern China, and will be able to ascend 95 floors in just 43 seconds.

**1**

Number of pieces of paper used to create a life-size origami elephant. Swiss artist Sipho Mabona spent four weeks folding the 50-by-50-foot sheet.



## EARTH: ENVIRONMENTAL PROTECTION

# TREE POACHERS

The tallest trees on Earth are in trouble. Northern California redwoods are falling prey to poachers who cut off large growths called *burls* to sell to local wood dealers. The wood from burls grows in wavy marble-like patterns, which makes it a popular material to use in expensive furniture and bowls.

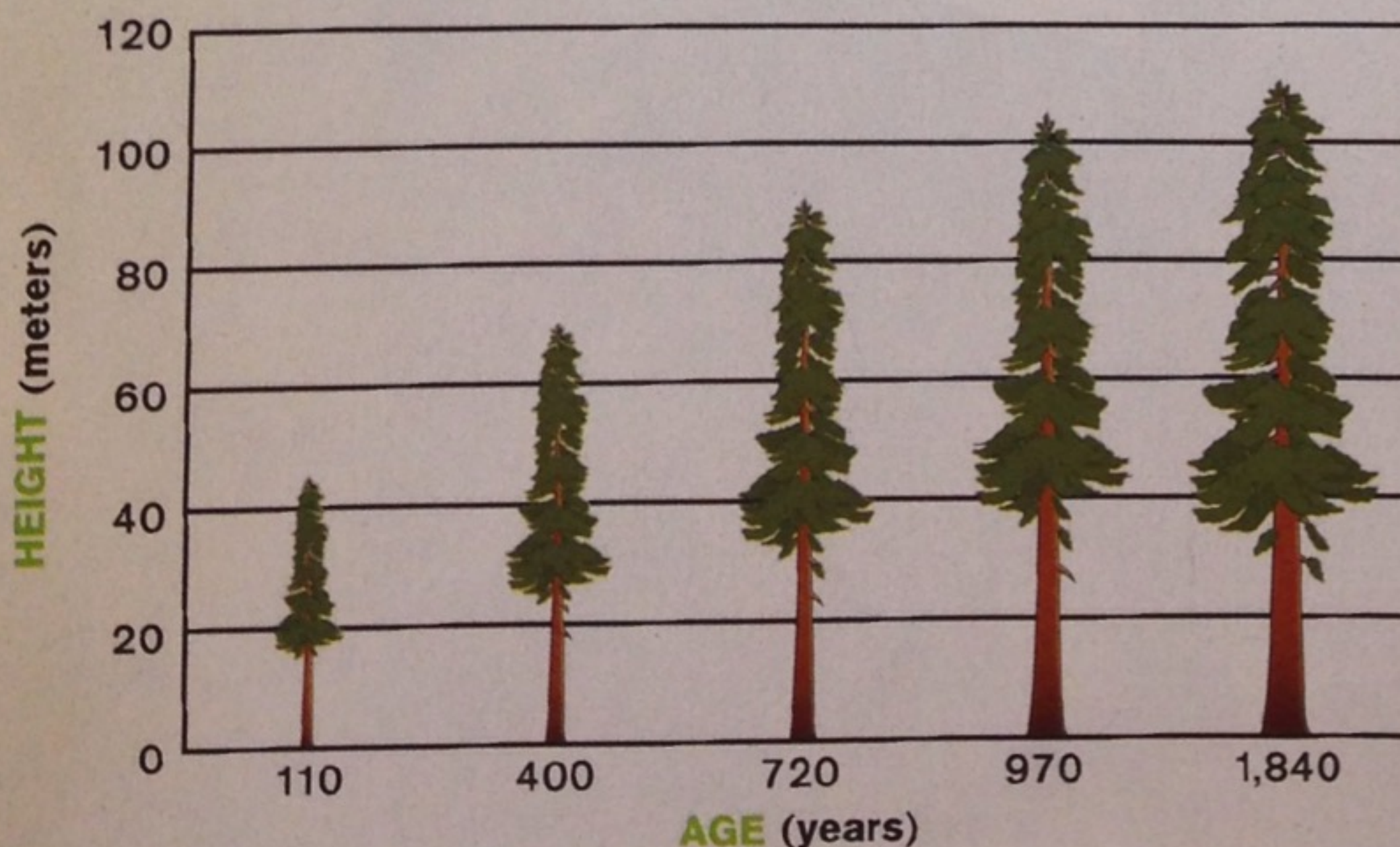
Poachers have sawed burls off fallen trees for decades, but now they're going after live trees as well. Cutting off a burl leaves trees vulnerable to infection, rot, and forest fires; weakened trees are more likely to fall over and die. "These are some of the oldest trees on the planet, and they take thousands of years to replace," says Emily Burns, director of science at the Save the Redwoods League in California.

To preserve the trees, officials are limiting nighttime access in popular poaching areas and increasing patrols.

—Abby Sajid

## TOWERING TREES

Redwoods can live up to 2,500 years and grow to heights of almost 120 meters (394 feet). How much taller is the 1,840-year-old redwood tree on the graph below than the one that's 400 years old?



Note: Heights depict individual redwood trees located along the coast of Northern California.  
SOURCE: SAVE THE REDWOODS LEAGUE